



UNIVERSITY OF RWANDA

Postgraduate Programmes





University of Rwanda

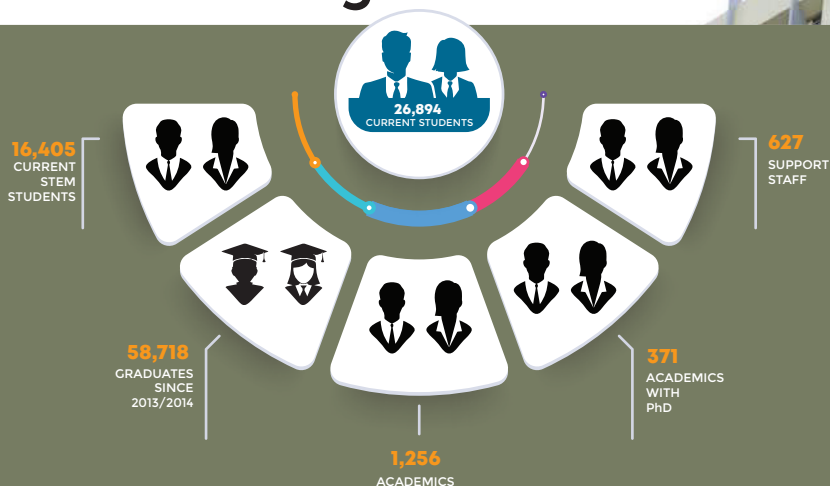


The University of Rwanda (UR) is a public Higher Learning Institution established by the law n° 71/2013 of 10/09/2013. It resulted from the merger of the former seven public Higher Learning Institutions (HLIs) into single public University with six Colleges and nine campuses distributed across the country. The UR is a singular, multi-campus institution offering a wide range of academic studies. As such, it provides opportunities for students to pursue a variety of programs - some that are quite specialized in nature, others that are multi-disciplinary and problem-based in focus - and to undertake their studies at different locations across the country, both through classes at designated campuses and through access to distance learning.

UR six (6) Colleges

1. College of Arts and Social Sciences (CASS)
2. College of Agriculture Animal Sciences and Veterinary Medicine (CAVM)
3. College of Business and Economics (CBE)
4. College of Education (CE)
5. College of Medicine and Health Science (CMHS)
6. College of Science and Technology (CST)

Key Facts and Figures



- UR is the only African university to host of 4 Centres of Excellence funded by the World Bank in ACE II
- Home of two Regional Centres of Excellence in Biomedical Engineering and e-Health; Vaccines, Immunizations and Health Supply Chain Management
- Home of ICTP-EAIFR (a Category 2 UNESCO Institute in Theoretical Physics)
- Home of the UNESCO supported Center of Excellence in Biodiversity and Natural Resource Management
- Home of Centre for Conflict Management (CCM), Centre for Gender Studies (CGS) and Centre for Mental Health

Why choose UR?

The University of Rwanda

- Understands you need to be competitive in the global marketplace.
- Offers you an opportunity to learn from a pool of leading academics and industry professionals experienced in teaching and research.
- Enables you to access support to ensure successful and timely completion of programme.
- Offers you access to an online system that facilitates and enhances learning.
- Wants you to focus on studies without financial interruption and offer flexible and competitive payment modalities.
- Understands that you may have a busy working life and domestic commitments, and so we've created flexible study options.
- Equips you with entrepreneurial skills regardless of the area of specialization
- Values partnerships with industry and renowned universities to ensure unprecedented opportunities
- Is privileged to share Rwanda with you - one of the most secure, green, clean, inclusive and fast developing countries in Africa



Why study in Rwanda

- According to the World Bank Group's 2015 Doing Business Report, Rwanda is the best performing country in East and Central Africa and third easiest place to do business in Africa.
- Rwanda is leading Africa's digital revolution. The Smart Kigali initiative will create access to free wireless internet on public buses, in hospitals, taxi parks, commercial buildings and restaurants, while a partnership with Korea Telecom is creating access to 4G for 95% of the population.
- Between 2001 and 2012, real GDP growth in Rwanda averaged 8.1% per annum. According to the Fitch rating agency, Rwanda is experiencing 'rapid and inclusive economic growth driven by credible economic policy'.
- Rwanda has the world's highest representation of women in parliament. 64% of Rwanda's parliamentarians are women.
- A dramatic improvement in healthcare delivery and health outcomes has seen life expectancy in Rwanda rise by 10 years in the last decade. Over 90% of Rwandans have access to medical insurance.
- Rwanda is one of the few African countries on track to achieve the Millennium Development Goals (MDGs). Net primary school attendance is over 91%.
- One million Rwandans overcame poverty between 2006 and 2011. Innovative homegrown development solutions have reduced poverty. For example, the Girinka programme, which provides every poor family in Rwanda with a cow, has reduced malnutrition, increased agricultural productivity and created small business opportunities.
- In 2007, Rwanda became the first country in the world to legislate an outright ban on plastic bags. It is estimated that the EU produces 3.4m tons of plastic bags in a year, creating carbon emissions and dangerous waste.
- On the last Saturday of every month, every Rwandan, starting with the President, participates in Umuganda, a day of national community service. Through Umuganda, Rwandans have built schools, medical centers, hydroelectric plants, and rehabilitated wetlands to create highly productive agricultural plots, and cleaned their cities, towns and villages – making Kigali one of the cleanest cities in Africa.
- According to the Ibrahim index of African Governance, Rwanda is one of the only two countries to show consistent overall governance improvements since 2000. It is ranked number one in Africa for gender and is one of the top five most improved countries since 2000.



College of Arts and Social Sciences (CASS)

The College of Arts and Social Sciences (CASS) offers postgraduate programs in Translation and Interpreting, Law, Development studies, Local Governance Studies, Gender and Development Studies, Security Studies, Peace Studies and Conflict Transformation, and Genocide Studies and Prevention. The College has 24 PhD by research and 9 Masters by coursework programs. Its programs have gained regional and international reputation, notably the Masters programs in Translation and Interpreting, Security Studies, Peace Studies and Conflict Transformation Studies.

Our Masters in Translation and Interpreting is one of its kind in the region and focuses on two African languages: Kinyarwanda and Kiswahili, the latter being the official language of East African Community (EAC), and two international languages: English and French (languages of UN). Given that Rwanda is becoming an international business and conference hub, this constitutes a great opportunity for our students to practice the use of these languages and improve their chances of employment. The program is supported by international institutions/partners such as the Organisation Internationale de la Francophonie (OIF)/Agence Universitaire de la Francophonie (AUF), and the European Union.

For the last 20 years CASS has operated a very active research and teaching Centre for Conflict Management. The Centre has also community outreach activities including community dialogue meant to enhance sustainable reconciliation and peace building. It is an academic Centre that aspires to become a Centre of Excellence and is leading in the process of national conflict transformation and genocide prevention operating in the context of a country that has experienced one of the most horrible genocides in the world. The Centre extends its activities to the Great Lakes Region, especially by organizing an annual International Conference in the Great Lakes Region that brings together academics, civil society and politicians. Its research activities are aligned to its Masters programs in security, peace, conflict studies, and genocide studies and prevention. These programs attract candidates from the region and beyond.

The College staffs has a high number of PhD holders and Professors which explains the level of research output achieved each year that has always been increasing, especially through the partnership with other Universities and the Swedish cooperation.

School of Arts and Languages

MA in Translation and Interpreting (Full time)
(Location: Gikondo Campus) Duration: 2years

Entry requirements

- BSc (with minimum grade: Lower Second) in any field of study.
- Proficiency in at least two of the following five languages: English, French, Kinyarwanda, Kirundi and Kiswahili.

PhD by Research in Literature (Full time)
Duration: 3years

Entry requirements

- MSc in Literary Studies
- Proficiency in at least two of the following five languages: English, French, Kinyarwanda, Kirundi and Kiswahili.

PhD by Research in Translation (Full time)
Duration: 3 years

Entry requirements

- MSc in Translation Studies
- Proficiency in at least two of the following five languages: English, French, Kinyarwanda, Kirundi and Kiswahili.

PhD by Research in Interpreting (Full time)
Duration: 3 years

Entry requirements

- MSc in Translation Studies
- Proficiency in at least two of the following five languages: English, French, Kinyarwanda, Kirundi and Kiswahili

PhD by Research Linguistics (Full time)
Duration: 3 years

Entry requirements

- Masters' degree in Linguistics
- Proficiency in at least two of the following



five languages: English, French, Kinyarwanda, Kirundi and Kiswahili.

PhD in Translation and Interpreting (Full time)

Duration: 3 years

Entry requirements

- MSc in Linguistics
- Proficiency in at least two of the following five languages: English, French, Kinyarwanda, Kirundi and Kiswahili.

Entry requirements

MSc in related fields

School of Law

LLM in Business Law (Full time)

(Location : Gikondo Campus) Duration: 2years

Entry requirements

Bachelors in Law from a recognized university

LLM in International Criminal Justice and the

Law of Human Rights (Full time) (Location:

Gikondo Campus) Duration: 2years

Entry requirements

Bachelors in Law from a recognized university

- **PhD by research in Human Rights (Full time)**
Duration: Four Years
- **PhD by research in Transitional Justice (Full time)**
Duration: Four Years
- **PhD by research in Public International Law (Full time)**
Duration: Four Years
- **PhD by research in Investment Law (Full time)**
Duration: Four Years
- **PhD by research in Environment Law (Full time)**
Duration: Four Years
- **PhD by research in Criminal Law (Full time)**
Duration: Four Years
- **PhD by research in Business Law (Full time)**
Duration: Four Years
- **PhD by research in International Criminal Law (Full time)**
Duration: Four Years



School of Arts and Governance

MA in Development Studies (Full time)
(Location: Gikondo Campus) Duration: Two years

Entry requirements

- Holding a Second class degree (satisfaction), or better
- Holding an equivalent qualification recognized by the Rwanda High Education Council. This includes qualifications from government accredited tertiary institutions within Rwanda and from across the East African Region, or other parts of the world.

Masters of Social Sciences in Local Governance Studies (Full time)
(Location: Gikondo Campus) Duration: Two years

Entry requirements

- Being a graduate from a recognized or accredited university or a program adjudged to be equivalent to a first degree
- An academic standing of a minimum of second class lower division
- A professional or work experience in governance, local government, research and consultancy and holding political administrative position are added value in addition to the above criteria
- **PhD in Development Studies (Full time) Duration: Four years**
- **PhD in Social Sciences (Social Work) (Full time) Duration: Four years**
- **PhD in History (Full time) Duration:**



Four years

- **PhD in International Relations (Full time) Duration: Four years**
- **PhD in Political Sciences (Full time) Duration: Four years**
- **PhD in Governance and Public Administration (Full time) Duration: Four years**

Entry requirements

Master's degree in related fields

Centre for Gender Studies

Masters of Social Sciences in Gender and Development (Full time) (Location: Gikondo Campus) Duration: 2years

Entry requirements

- Holding a Second class degree (satisfaction), or better
- Holding an equivalent qualification recognized by the Rwanda High Education Council. This includes qualifications from government accredited tertiary institutions within Rwanda and from across the East African Region, or other parts of the world.
- Any field
- **PhD by research in Gender and Development (Full time) Duration: Four years**
- **PhD by research in Gender Studies (Full time) Duration: Four years**

Entry requirements

MSc in related fields

Centre for Conflict Management (CCM)

Masters of Arts in Genocide Studies and Prevention (Full time) (Location: Gikondo Campus) Duration: 2years

Entry requirements

- BA in Social Science, Humanities, Arts, Law, Politics, Economics and any other related field with a strong personal engagement in genocide studies.
- A letter of recommendation,
- Proving the capacity to pay tuition fees

Masters of Arts in Peace Studies and Conflict Transformation (Full time) (Location: Gikondo Campus and National Police College Musanze) Duration: 18 months

Entry requirements

- Capable to speak and write English
- A letter of recommendation,
- A short letter of motivation for why the student wants to join the course,
- BA in Social Sciences, Humanities, Arts, Law, Politics, Economics, Management and any other related field with a professional engagement in Peace and Conflict Studies.

Masters of Arts in Security Studies (Full time) (Location: RDF CSC Nyakinama) Duration: 1 year

Entry requirements

- Senior officer (Major and above) or equivalent
- Bachelors or equivalent
- Having completed inter-mediate command and staff course or equivalent
- Having passed MA entry test
- English proficiency
- **PhD by research in Peace and Development (Full time) Duration: 3 years**
- **PhD by research in Leadership and Reconciliation (Full time) Duration: 3 years**
- **PhD by research in Social and Political Sciences (Full time) Duration: 3 years**

Entry requirements

MSc in related fields

A photograph of several young people, likely students, standing in a lush green field, possibly a farm or agricultural research site. They are looking towards the camera. The background shows more greenery and a few other people in the distance.

College of Agriculture, Animal Science and Veterinary Medicine (CAVM)

The College of Agriculture, Animal Sciences and Veterinary Medicine (CAVM) is one of the six colleges constituting the University of Rwanda (UR). CAVM is located on three campuses, i.e., Busogo in the Northern, Huye in the Southern, and Nyagatare in the Eastern provinces. These three locations represent three of the most representative agro-ecological zones of Rwanda namely North-Western Volcanic Highlands, the Central Plateaus, and the Eastern Semi-Arid Savannas, respectively. CAVM is accredited to offer agricultural programmes at graduate level (Masters and PhD): five (5) Masters programmes by coursework, six (6) PhD programmes by research, and very soon one (1) PhD by coursework. Available research expertise enables CAVM to lead UR's Research Cluster 1 (Agricultural transformation and food security), co-lead the research cluster 3 (Environment, Natural Resources Management and Climate Change) and scientifically contribute to research clusters two, five, seven and eight (Socio-Economic Transformation and Sustainable Development; Urbanization, Green Cities, and Human Settlements; Health and Wellbeing for all; and lastly Sustainable Energy and Manufacturing respectively). These research clusters are designed to respond to emerging national and sectoral priorities aligned with national development goals and the SDGs.

In line with the on-going National Strategy for Transformation (NST-1), CAVM is working tirelessly toward an academic environment that attracts local, and international students. Through the commitment of the Government of Rwanda and the help of development partners, CAVM is working hard to equip schools located at each of the three abovementioned campuses with good agricultural laboratories, ideas generation centers, reliable internet connectivity, ICT and library facilities with both digital and printed resources, greenhouses and open field for field experiments, and good ties to communities' libraries. Our vision is that by joining our programmes, graduate students become part of vibrant research teams that are at the forefront of research and innovation geared towards rural and agricultural transformation, food and nutrition security, climate smart, fair and ecologically friendly agriculture.

Recently, through the UR-Swedish Cooperation, CAVM was awarded two capacity building grants to reinforce its graduate programmes. In addition to these two grants CAVM also runs a number of other projects through which postgraduates' students get support both for demonstration during coursework and research for their thesis (e.g. SEAD project). Academic staff do also run small research / innovation projects that involve postgraduate students for their thesis.

School of Agriculture and Food Sciences

MSc in Agribusiness (240 credits-Weekend)
(Location: Gikondo Campus) Duration: 2 Years

Entry requirements

Bachelor of Science Degree in Agribusiness, Agricultural economics, Rural development, economics, crop sciences, and other related fields. Should demonstrate clear source of funds for her/his studies

MSc in Crop Sciences (240 Credits Full time day)(Location: Busogo Campus) Duration: 2 Years

Entry requirements

- Bachelor degree in Crop Sciences, Soil Sciences, Agronomy and other related field from a recognized university, with Second class upper division or equivalent.
- Applicants should demonstrate clear source of funds for her/his studies

School of Forestry and Biodiversity Conservation

MSc in Agro forestry and Soil Management (240 credits-Full time day) (Location: Huye Campus) Duration: 2 Years

Entry requirements

- Bachelor degree in Soil Sciences, Soil and Water Management, Soil and Environmental Management, Forestry and Agroforestry, Crop Sciences and other related fields.
- Applicant should demonstrate clear source of funds for her/his studies

- PhD by Research in Soil & Environment Management
- PhD by Research in Agriculture, Duration: 3 Years
- PhD by Research in Agriculture Engineering with specialization in Crop Engineering, Duration: 3 Years
- PhD by Research in Agriculture Engineering with specialization in Soil and Water Engineering: Duration: 3 Years
- PhD by Research in Agroforestry:



Duration: 3 Years

- **PhD by Research in Animal production & Veterinary Medicine Duration: 3Years**

Entry requirements

- The candidate should hold a MSc in Crop, Soil, Agroforestry Sciences, Agribusiness and Rural development or related field.
- Applicants should submit a research proposal for his/her PhD study.
- Applicants should demonstrate financial capacity to cover tuition and all research related costs

School of animal science and Veterinary Medicine

MSc in Animal Production (300 credits: Two Majors combined. Full time day) (Location: Nyagatare Campus) Duration: 2 Years

Major

1. Animal nutrition (240 credits)
2. Animal breeding (240 credits)

Entry requirements

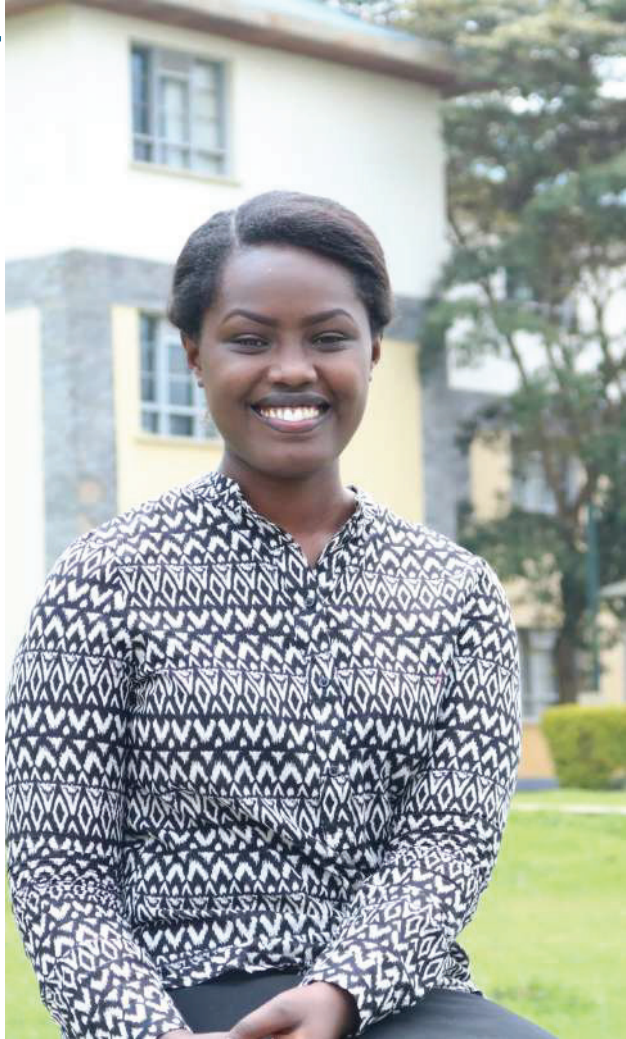
- Bachelor degree in Animal Production, Veterinary Medicine, Aquaculture, Livestock Management, and other related fields
- Applicants should demonstrate clear source of funds for her/his studies

School of Agricultural Engineering

MSc in Soil and Water Engineering (240 Credits Full time day) (Location: Nyagatare Campus) Duration: 2 Years

Entry requirements

- Bachelor degree in Soil & Water Management, Irrigation & Drainage, Water Resources Management, Agricultural



Mechanization, Soil Science and Soil & Environmental Management, Civil Engineering or its equivalent from a recognized university.

- Applicants should demonstrate clear source of funds for her/his studies

College of Business and Economics (CBE)



The College of Business and Economics (CBE) is one of six colleges of the University of Rwanda (UR). The college offers 16 Masters and 21 PhD programs, including 6 PhD programs by Course Work. All Masters programmes are coursework-based. The College competitively won a regional Centre of Excellence that makes it the only hub for graduate studies in Data Science in eastern and southern Africa.

CBE is a multi-campus College where students have a wide range of choices to pursue their studies either full-time or part-time at one of its four campuses (Gikondo, Huye, Nyagatare and Rusizi) that are strategically distributed in the country.

The college regularly attracts both national and international students, and leading public figures to give lectures, attend conference and seminars and consult staff in economics,

business and related fields. The College's academic and research profile spans a broad range of topics, and is renowned for studying real world problems, from money policy analysis, banking, development economics, demography, actuarial and economic statistics, policy analysis, health economics, agricultural economics, agricultural business, human resources management, insurance, accounting and finance.

By choosing to pursue a postgraduate program at CBE, you join a vibrant multi-cultural learning environment enriched by interaction with highly qualified international and national faculty. Through a range of partnerships with regional and international universities the college provides opportunities for faculty and students exchange programmes and participation to international conferences with invaluable learning experience.

School of Economics

Masters in Economics (Full time-Day-Evening and Weekend)(Location: Gikondo,Rusizi and Nyagatare Campus) Duration: 2 years

Entry requirements

- Candidates having an Upper Second Class and above in the BSc Economics, Statistics, Applied Statistics and Mathematics programmes of UR or other recognized Universities can apply for the programme
- Candidates with lower division with a working experience of at least 2 years can also apply

MSc in Regulatory Economics & Competition policy (Full time-Day-Evening & Weekend) (Location: Gikondo Campus) Duration: 2years

Entry requirements

- Candidates having a Bachelor's degree in Economics, Commerce, Statistics, Mathematics, Engineering, Agricultural economics, Quantitative economics, Finance, Accounting and related fields with Second class Upper division;
- A Bachelor's degree in the same fields with second class, lower division, with at least a 2-year industrial experience;
- Demonstrate sufficient ability in English to undertake master-level work.

PhD in Economics (by coursework and thesis Full time)(Location: Gikondo Campus) Duration: Three years



Entry requirements

- MSc in Economics by coursework with upper division second class honours or equivalent or in Economics by course work with second class honours lower division and 2 years working experience or in with course in Commerce, Statistics, Mathematics, Engineering, Agricultural Economics, Quantitative Economics, and other related fields
- Demonstrate sufficient ability in English to undertake doctoral-level work.

PhD in Economics (By Research Full time)**Duration: 3 years full time and 4 years part-time****Entry requirements**

- Masters in Economics by coursework with second class honours upper division or equivalent or in Economics by coursework with second class honours lower division and with 2 years' working experience.
- Demonstrate sufficient ability in English to undertake doctoral-level work.

PhD in Applied Statistics (by Research Full time)Duration: 3 years full time and 4 years part-time**Entry requirements**

MSc in Statistics, and Applied mathematics by coursework with second class honors upper division or equivalent.

Masters in Accounting (Full time- Evening & Weekend)(Location: Gikondo, Rusizi and Nyagatare Campus) Duration: 2years**Entry requirements**

- Bachelor degree in Accounting from a recognized university
- Competence in the use of English as a medium of instruction

Master in Public Procurement (Full time- Evening & Weekend)(Location: Gikondo, Rusizi and Nyagatare Campus) Duration: 2years**Entry requirements**

- Bachelor degree in Business Administration with specialization of procurement, accounting or related programme from a recognized university
- Competence in the use of English as a medium of instruction

School of Business

Master of Business Administration (Full time- Evening & Weekend)(Location: Gikondo, Rusizi and Nyagatare Campus) Duration: 2years**Options**

1. Banking
2. Finance
3. Human Resource Management
4. Project Management
5. Marketing
6. Insurance

Entry requirements

- Bachelor's degree in Business Administration, Economics, Accounting, BIT or its equivalent from a recognized university.
- Competence in the use of English as a medium of instruction.

MBA in Impact Entrepreneurship (Full time- Evening & Weekend)(Location: Gikondo, Rusizi and Nyagatare Campus) Duration: 2 years**Entry requirements**

- Bachelor degree preferably in the related discipline from a recognized university. Work experience of at least 2-3 years
- English Skills and Experience in the use of PCs and Computer technologies
- Ideas for start- up or scale –up of Business or non -for- profit ventures with high social impact

- **PhD by research in Health Management**
- **PhD by research in Accounting**
- **PhD by research in Finance**
- **PhD by research in Entrepreneurship**

- **PhD by research in Marketing**
- **PhD by research in Project Management**
- **PhD by research in Banking**
- **PhD by research in Human resource management**
- **Duration: 3 years full time and 4 years (Part time)**

Entry requirements

- Master's degree in Business Administration, master's degree Accounting or related programmes from a recognized university.
- Research Proposal is the same area as undergraduate and master's programmes.
- A Cumulative average of at least 70% at completion of master's programme or 65% with minimum of 3 years of professional experience
- **PhD by course work in Management (General Management)**
- **PhD by course work in Management (Entrepreneurship and Strategy)**
- **PhD by course work in Management (Marketing)**
- **PhD by course work in Management (Accounting)**
- **PhD by course work in Management (Finance and Banking)**
- **(Location: Gikondo Campus) Duration: 3years full time by course work and thesis**

Entry requirements

- Master's degree in Business Administration, master's degree Accounting or related programmes from a recognized university.
- Research proposal in the same area as undergraduate and master's programmes.

- A cumulative average of at least 70% at completion of master's programme or 65% with minimum of 3 years of professional experience
- African Centre of Excellence in Data Science

African Centre of Excellence in Data Sciences (ACE-DS)

MSc in Data Science (Full time- Day or Evening) (Location:Gikondo Campus)
Duration: 2years

Options

1. Data mining
2. Econometrics
3. Biostatistics
4. Demography
5. Actuarial sciences

Entry requirements

Bachelor degree with at least upper second class (Second Class, Upper Division) in mathematics, statistics, economics, computer science and other related disciplines

PhD by research in Data Science (Full time)
Duration: 3 years

Options

1. Data mining
2. Econometrics
3. Biostatistics
4. Demography
5. Actuarial sciences

Entry requirements

Relevant MSc with coursework in Statistics, Mathematics, Computer Science, Information Technology, Economics and other disciplines related to data science



College of Medicine and Health Sciences (CMHS)

The College offers 8 PhD programmes and 30 Masters programmes accredited by the Higher Education Council. PhD programmes are research based, while Masters programmes are course work based. The College has a conducive learning environment that has reliable internet connectivity, library facilities with printed and digital resources, and academic staff of international renown.

The College enjoys strong partnerships with referral hospitals, research centers and other international health organizations. This makes CMHS a good choice for those who wish to pursue postgraduate studies in Medicine and Health Sciences, as well as a career in healthcare and academia at regional and international levels.

The College admits students from countries within the East African region and beyond. In partnership with other regional and international

universities the College faculty have numerous research publications and one of the most renowned studies won an award by the World Academy of Science in 2017.

CMHS remains unique in the field regionally for winning two Regional Centers of Excellence; the Regional Centre of Excellence in Biomedical Engineering and e-Health and the Regional Centre of Excellence in Vaccines, Immunization and Health Supply Chain Management. These Centers serve the East Africa Region and offer Masters and PhD programmes.

School of Medicine and Pharmacy

- **Master of Medicine (MMed) Anaesthesia** Full time-day (Location: Training hospitals) Duration: Four years
- **MMed Internal Medicine** Full time-day (Location: Training hospitals) Duration: Four years
- **MMed Obstetrics &Gynaecology** Full time-day (Location: Training hospitals) Duration: Four years
- **Master of Medicine in Paediatrics** Full time-day (Location: Training hospitals) Duration: Four years
- **MMed Surgery (General Surgery)** Full time-day (Location: Training hospitals) Duration: Four years
- **MMed Anatomical Pathology** Full time-day (Location: Training hospitals) Duration: Four years
- **MMed ENT (Ear, Nose & Throat)** Full time-day (Location: Training hospitals) Duration: Four years
- **MMed Orthopaedic Surgery** Full time-day (Location: Training hospitals) Duration: Five years
- **MMed Urology** Full time-day (Location: Training hospitals) Duration: Five years
- **MMed Neurosurgery** Full time-day (Location: Training hospitals) Duration: six years
- **MMed Psychiatry** Full time-day (Location: Training hospitals) Duration: Four years
- **MMed Radiology** Full time-day (Location: Training hospitals) Duration: Four years
- **MMed Emergency Medicine** Full time-day (Location: Training hospitals) Duration: Four years



Entry requirements

- Bachelor of Medicine and Surgery Degree
- Minimum of 2 years' working experience in a hospital
- Proficiency in the English Language
- Pass an entry examination with a minimum score of 60%

MSc Clinical Psychology and Therapeutics (Full time-day)(Location: Remera Campus) Duration: Two years

Entry requirements

- BSc in Clinical Psychology or related field
- A minimum of 2 years' working experience
- Proficiency in the English Language

MSc in Pharmaceutical Sciences (Quality Control & Quality Assurance) (Full time-day)(Location: Remera Campus) Duration: Three years

Entry requirements

- BSc in Pharmacy or related field
- Proficiency in the English Language

School of Health Sciences

MSc in Health Services Administration (Full time-day) (Location: Remera Campus) Duration: Two years

Entry requirements

- BSc/BA Health Sciences or management
- Proficiency in the English Language

School of Nursing and Midwifery

MSc in Nursing (Full time-day) (Location: Remera Campus) Duration: Two years

Options

- Critical Care & Trauma Nursing
- Pediatric Nursing
- Medical Surgical Nursing
- Nephrology
- Neonatology
- Oncology
- Peri-operative Nursing
- Education, Leadership & Management

Entry requirements

- BSc/BN in Nursing
- 2 years' clinical experience
- Proficiency in the English Language
- Pass an entry examination with a minimum of 60%



School of Public Health

MSc in Epidemiology (Full time-day) (Location: Remera campus) Duration: Two years

Entry requirements

- MB BS or BSc Nursing or Health Sciences
- English Language

MSc in Public Health (Full time-day) (Location: Remera Campus) Duration: Two years

Entry requirements

- MB BS or BSc Nursing or Health Sciences
- Proficiency in the English Language

MSc in Field Epidemiology & Laboratory Management (Epidemiology) (Full time-day)(Location: Kicukiro Campus) Duration: Two years

Entry requirements

- MB BS or BSc Nursing or Health Sciences
- Working experience in Healthcare services
- Proficiency in the English Language

MSc in Field Epidemiology & Laboratory Management (Laboratory Management) (Full time-day) (Full time-day) (Location: Kicukiro Campus) Duration: Two years

Entry requirements

- BSc in Biomedical Laboratory Sciences
- Working Experience in Medical Laboratory Services
- Proficiency in the English Language

EA Regional Centre of Excellence for Vaccines, Immunisation and Health Supply Chain Management

MSc in Health Supply Chain Management (Full time-day)(Location: Kicukiro Campus) Duration: Two years

Entry requirements

A Bachelor's Degree in any of the following fields:

1. Health Sciences
2. Nursing
3. Pharmacy
4. Public Health
5. Management (procurement or

logistics

- Proficiency in the English Language
- A minimum of 2 years' experience in health supply chain

PhD Programmes

PhD by Research in Medicine (Full time)

Duration: 4years

Entry requirements

Masters in Medicine

PhD by Research in Pharmacy (Full time)

Duration: 3years

Entry requirements

MSc in Pharmacy or any other Pharmaceutical Sciences

PhD by Research in Clinical Psychology (Full time)Duration: 3years

Entry requirements

MSc in Clinical Psychology or Counseling Psychology

PhD by Research in Biomedical Sciences (Full time)Duration: 3years

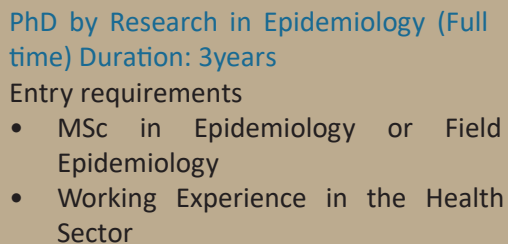
Entry requirements

- MSc in Medicine
- Any other Master of Science Degree in the area of Health Sciences

PhD by Research in Rehabilitation Sciences (Full time) Duration: 3years

Entry requirements

MSc in Physiotherapy, Occupational Therapy, Prosthetics and Orthotics or any other rehabilitation science



College of Education (CE)



The College of Education is one of the six Colleges of the University of Rwanda. It is a specialized institution in teacher education. It offers training, ensures assessment and certification of all teachers at secondary level. It also equips secondary school teachers and university lecturers with pedagogical skills on the journey to become professional teachers.

It offers Masters and PhD opportunities for professionals who are working or intend to work in the education sector and who need to advance their knowledge, skills and professional competences. The College offers 26 PhD by Research, 10 Masters degrees, 4 Postgraduate Diploma and 1 Postgraduate Certificate program accredited by the Higher Education Council.

By choosing the College of Education, you will be trained by high caliber faculty who demonstrate a long experience in teaching, research and, supervision of postgraduate

students. College academicians, researchers and scholars publish their papers in reputed international journals. Most of their specialized educational publications can be retrieved at <https://www.ajol.info/index.php/rje>.

The College avails specialized learning facilities such as a multimedia studio, a language laboratory and a resource room for students with disabilities and special needs.

The population of postgraduate students is diverse. In the African Centre of Excellence in Innovative Teaching and Learning Mathematics and Science (ACEITLMS) 22% of Masters students and 43% of PhD students are international.

The ACEITLMS aims at strengthening human capacity to deliver research-based quality teaching and learning of mathematics and science in Rwanda and across the region, in collaboration with regional and international institutions.

School of Education

Postgraduate Diploma in Education (PGDE)
(Full time in secondary school holidays)
(Remera and Rukara campus) Duration: 1 year

Entry requirements

- Bachelor's degree in any discipline;
- Evidence of involvement in teaching in secondary schools or willing to be a teacher
- Ability to use English as a medium of instruction

Postgraduate Certificate in Learning and Teaching in Higher Education (PGCLTHE) (Part time and Work-based learning)(Location: Remera Campus) Duration: six months year

Entry requirements

- At least a Bachelor's Degree in any discipline
- Evidence of Involvement in Teaching in Higher Learning Education
- Ability to use English as a medium of instruction

Masters in Education (Full time in weekends)
(Location: Remera and Rukara campus),Duration: Two years

Options

1. Curriculum and Instruction
2. Educational Leadership and Management

Entry requirements

- Bachelor's degree in Education or in any other field of study with a Postgraduate Diploma in Education (PGDE)
- Ability to use English as medium of instruction



Masters in Education (Full time in weekends) (Location: Remera and Rukara campus) Duration: Two years

Options

- English Education
- Kinyarwanda Education
- Kiswahili Education
- Enseignement du Français

Entry requirements

- Bachelor's degree in Education or in Arts/Language (English, French, Kinyarwanda or Kiswahili)

- Ability to use English as medium of instruction
- Ability to use as medium of instruction the language of the option you are applying for

PhD by Research in Education (Full time)

Duration: Four years

Options

- Mathematics Education
- Physics Education
- Chemistry Education
- Biology Education
- ICT in Education
- English Education
- Kinyarwanda Education
- Kiswahili Education
- French Education
- Social Studies
- Primary and Early Childhood Education
- Geography Education
- History Education
- Psychology of Education
- Educational Leadership and Management
- Curriculum and Instruction
- Philosophy of Education
- Economics of Education

Entry requirements

Master's degree in a related field



**School of Inclusive and
Special Needs Education**

MEd in Special Needs Education (Full time in weekends)(Location: Remera campus)

Duration: 2 years

Entry requirements

Bachelor degree in Education or in any other related Social Sciences

Ability to use English as a medium of instruction

PhD by Research in Education (Full time)

Duration: 3 years

Options

- Inclusive Education
- Disability Studies
- Special Educational Needs

Entry requirements

MSc in a related field

Ability to use English as medium of instruction

PhD by Research in Education (Full time)

Duration: 4 years

Options

- Biology Education
- Chemistry Education
- Physics Education
- Mathematics Education

Entry requirements

MSc in a related field

**African Centre of Excellence
in Innovative Teaching and
Learning Mathematics and
Science**

**Masters in Education (Full time at weekends)
(Location: Rukara Campus for day program
and Remera for weekends programmes),
Duration: 2 years**

Options

- Chemistry Education
- Physics Education
- Mathematics Education
- Biology Education

Entry requirements

- BEd (Hons.) in a related field with upper second class or equivalent
- BSc (Hons.) in a related field with Postgraduate Diploma in Education





College of Science and Technology (CST)

CST offers 13 PhD Programmes and 21 Masters Programmes in Postgraduate studies accredited by the Higher Education Council. Our PhD programs and Masters are research or coursework based depending on the program specifications.

The establishment of UR-CST was part of Rwanda Government's mission to build a strong ICT, science and technology sector. UR-CST has a central role to play in the Science and Technologies sector of the nation and all over the world. This is much more so in view of the fact that Rwanda has chosen Science and Technology as vehicle for national development. In support of this, the College engages in capacity building relevant to this cause by spearheading scientific and technological innovation, through robust and relevant research programs.

The College has an excellent learning environment that has reliable internet connectivity, library facilities with both printed and digital resources, ICT and other relevant Laboratories. Our academic staff are regional and international known. CST hosts science and technology programs

and it accommodates regional centers of Excellence; Centre for Biodiversity, Conservation and Natural Resources Management, African Centre of Excellence in Internet of Things (ACE IoT), African Centre of Excellence in Energy and Sustainable Development (ACE-ESD), and ICTP East African Institute for Fundamental Research (ICTP/EAFIR) that offer PhD and Masters programs.

By choosing to pursue a postgraduate programme at CST, you will be specialized in scope of research in Science and Technology and be recognized internationally as academician for teaching and research in different recognized institutions. In CST, they are students from different nationalities who made a choice of pursuing their studies here. In partnership with other regional and international universities, our researchers published their articles through international conferences and research journals.

Geographically, the College of Science and Technology is situated on 2 main campuses: Nyarugenge (HQ) in Kigali, and Huye in South Province.

School of Sciences

MSc in Atmospheric and Climate Sciences (Full time day)(Location: Nyarugenge Campus) Duration: 2 Years

Entry requirements

Bachelor degree in Physical Sciences with a cumulative average of at least 60

MSc in Applied Mathematics (Full time day) (Location: Nyarugenge Campus) Duration: 2 Years

Entry requirements

Bachelor degree with honors in Mathematics and Physics

MSc in Environmental Chemistry (Full time day) (Location: Nyarugenge Campus) Duration: 2 Years

Entry requirements

Bachelor degree in chemistry, pharmacy, agriculture (soil analysis), food sciences and biochemistry

MSc in Biodiversity Conservation and Natural resources Management (Full time day)

(Location: Nyarugenge Campus) Duration: 2 Years

Entry requirements

Bachelor degree in the field of Biology (Botany and Conservation; Zoology and Conservation), Agriculture, wildlife management, or any other related field of nature conservation

PhD in Biology: (Biotechnology, Microbiology, Biochemistry) by research and dissertation/thesis Duration: 3-4 years

Entry requirements

MSc in Biological Sciences or equivalent



PhD in Chemistry: (organic Chemistry, Environmental Chemistry, Physical Chemistry, Inorganic Chemistry) by research and dissertation/thesis Duration: 3- 4 years

Entry requirements

MSc in Chemistry or Equivalent

PhD in Physics by research and dissertation/ thesis Duration: 3- 4 years

Entry requirements

MSc in Physical sciences and MSc in Applied Mathematics

PhD in Mathematics (Pure Mathematics, Applied Mathematics, &Statistics) Fulltime day by coursework and dissertation (Location: Nyarugenge Campus) Duration: 4-5 years

Entry requirements

MSc in Mathematics

**PhD in Physics by research and dissertation/
thesis Duration: 3-4 years**

Entry requirements

MSc in Physical sciences and MSc in Applied mathematics

Entry requirements

Bachelor degree in Computer Science or any related field

**PhD by Research in ICT: software engineering,
computer science by Research (Location:
Nyarungenge Campus) Duration: Four years**

Entry requirements

MSc in any of engineering or ICT

School of ICT

**MSc in Information Systems Duration: Two
years (Location: Nyarungenge Campus)
Option**

- E-governance -blended mode (online and on-campus)
- Internet technologies Full time (day)

Entry requirements

Bachelor degree in Computer Science or any related field

**MSc in Information and Communication
Technologies (operational communications)
Full time (day) (Location: Nyarungenge
Campus) Duration: Two years**

Entry requirements

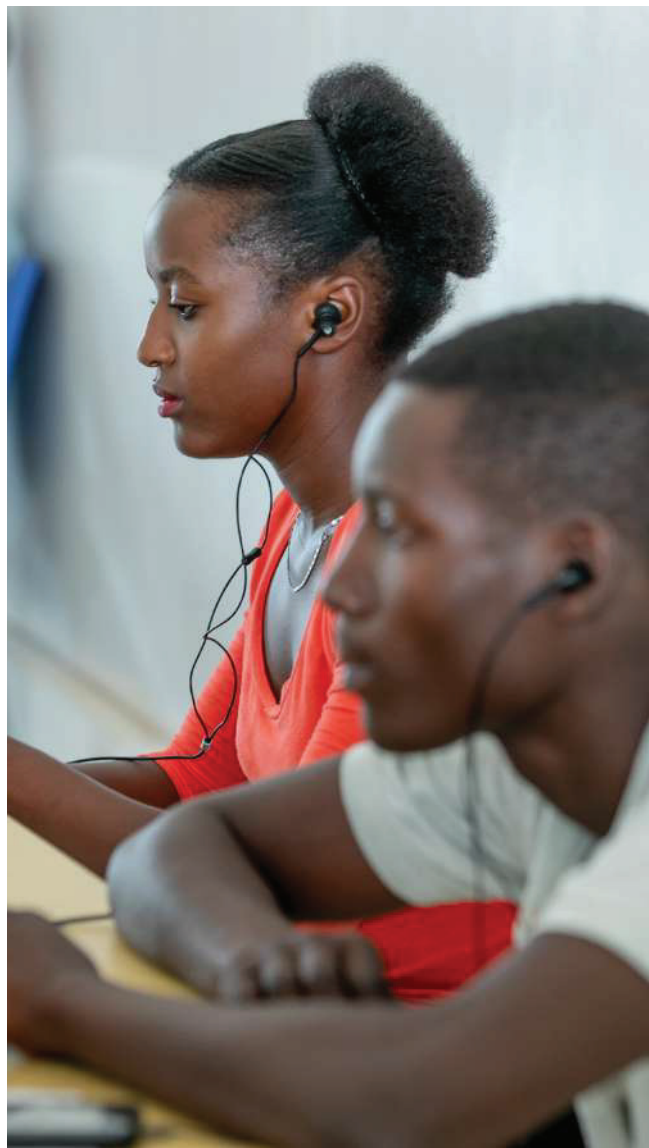
Bachelor degree in Computer Science or any related field

**MSc in Computer Science (option: Software
Engineering) Full time (day)
(Location: Nyarungenge Campus) Duration:
Two years**

Entry requirements

Bachelor degree in Computer Science or any related field

**MSc in Communications Management by
e-learning (eMCM) (eLearning)
(Location: Nyarungenge Campus) Duration:
Two years**



School of Engineering

Master of Science in Transportation Engineering and Economics Full time (day)
(Location: Nyarugenge Campus) Duration: 2 years

Entry requirements

Bachelor degree in Civil engineering or any related field

Master of Science in Highway Engineering and Management (Full time day by coursework and dissertation) (Location: Nyarugenge Campus) Duration: 2 years

Entry requirements

Bachelor of Science in civil engineering

Master of Science in Water resources and Environmental Management (Full time day by coursework and dissertation) (Location: Nyarugenge Campus) Duration: Two years

Entry requirements

A Bachelor degree in Civil Engineering or any related field

PhD in environmental engineering
(Full time, by research publication and dissertation/thesis) Duration: 3-4years

Entry requirements

MSc in environmental engineering or any MSc related to the field

PhD in Highway Engineering (Full time, by research publication and dissertation/thesis)Duration: 3-4 years

Entry requirements

MSc in Highway engineering or related field

PhD in Water Resource Engineering
(Full time, by research publication and dissertation/thesis) Duration: 3-4 Years

Entry requirements

MSc in water resource Engineering or related field

School of Architecture and Built Environment

MSc in Geo-Information Science for Environment & Sustainable Development (Full time week-end) (Location: Nyarugenge Campus) Duration: Two years

Entry requirements

Bachelor degree in geography, agriculture, biology, chemistry civil engineering, environmental engineering, Mining and Geology, and other related fields



African Centre of Excellence in Internet of Things (ACE IoT)

MSc in Internet of Things: Embedded Computing Systems (MSc in IoT: ECS) Full time (day) (Location: Nyarugenge Campus) Duration: Two years

Entry requirements

Bachelor degree in Engineering/Technology (Computer Engineering, Computer Science, Information Technology, Electrical Engineering, Electronics and Communications Engineering) or equivalent from any recognized Institution

MSc in IoT: Wireless Intelligent Sensor Networking (MSc in IoT: WISeNet) Full time (day) (Location: Nyarugenge Campus) Duration: Two years

Entry requirements

Bachelor degree in Engineering/Technology (Computer Engineering, Computer Science, Information Technology, Electrical Engineering, Electronics and Communications Engineering)

PhD in IoT with Specialization in Wireless Intelligent Sensor Networking

PhD in IoT with Specialization in Embedded Computing Systems Full time by research publication and dissertation/thesis (Location: Nyarugenge Campus) Duration: Four years

Entry requirements

Bachelor degree in Engineering/Technology (Computer Engineering, Computer Science, Information Technology, Electrical Engineering, Electronics and Communications Engineering)



African Centre of Excellence in Energy for Sustainable Development (ACE ESD)

MSc in Electrical Power Systems Full time (day)
(Location: Nyarugenge Campus) Duration:
Two years

Entry requirements

Bachelor degree in Mechatronics, Mechanical Engineering, Electrical Engineering, and Electro-Mechanical Engineering or Renewable Energy Engineering or other related fields

MSc in Renewable energy Full time (day)
(Location: Nyarugenge Campus) Duration:
Two years

Entry requirements

Bachelor degree in Mechatronics, Mechanical Engineering, Electrical Engineering, Electro-Mechanical Engineering, Energy Engineering or Renewable Energy Engineering or other related fields

MSc in Energy Economics Full time (day)
(Location: Nyarugenge Campus) Duration:
Two years

Entry requirements

Bachelor degree in Economics, accountant, Statistics, Engineering, Agricultural Economics, Quantitative Economics, Finance, or related fields

PhD in Renewable Energy

PhD in Electrical Power Systems

PhD in Energy Economics; Full time, by research publication and dissertation/thesis
(Location: Nyarugenge Campus) Duration:
Four years



Entry requirements

MSc (or Equivalent) degree in the field related to energy, electrical engineering , mechanical engineering, physics and material sciences, energy economics, economics and policy, energy economics and finance and regulations

International Centre for Theoretical Physics (ICTP/EAIFR)

MSc in Physics (Specializations: High Energy Physics, Condensed Matter Physics, Solid Earth Geophysics) Full time coursework and a final thesis is at the end of the second year(Location: Nyarugenge Campus) Duration: Two years

Entry requirements

Bachelor degree with honors in Physics or Mathematics with distinction

PhD in Physics (High Energy Physics, Condensed Matter Physics, Solid Earth Geophysics) By Research and dissertation/thesis(Location: Nyarugenge Campus) Duration: Four years

Entry requirements

MSc in physics, mathematics, or a related field

Regional Centre of Excellence in Biomedical Engineering and E-Health

MSc in Health Informatics (Full time-day) (Location: Remera Campus) Duration: Two years

Entry requirements

- BSc in any of the following fields:
 1. Health Sciences
 2. Nursing
 3. ICT
- Proficiency in the English Language



FEE AND MODALITIES OF PAYMENT AT UR

Payment of fee at UR is made by direct deposit into relevant UR Banking Accounts. The University offers a payment by installment facilities. The fee is categorized into two, that is, the Administrative Fee which is non-refundable and the tuition which is allocated by College and Program.

For more details on UR fee structure check www.ur.ac.rw

WHEN TO APPLY?

The application to UR Postgraduate programs (PGP) is done twice a year and by intake. For PhD and Masters by Research, applications can be received at any time. PhD by Research applications is done throughout the year. For PhD and Masters by course, applications can be done in two intakes that is September and April and applicants apply when

there is an advertised call.

For September intake, applications are normally received between May and July and April intake applications are received between December and February.

We are encouraging the applicants to apply as early as possible since the application cycle is open.

HOW TO APPLY?

The application at UR is done online at www.ur.ac.rw application portal.

In order to apply online you will need a working e-mail address and a Rwandan National ID number or a passport number if you are an International applicant. Knowledge of English Language is mandatory as English is a medium language of instruction.

For more details on UR programmes you can log on: www.ur.ac.rw or send an email to dcgs@ur.ac.rw





Learning Environment and Facilities

A choice of campuses

The University of Rwanda offers prospective students the choice of eight campuses depending on program allocation, each with its own distinctive character. Rusizi campus, Huye campus, Nyarugenge campus, Gikondo campus, Remera campus, Rukara campus, Nyagatare campus, Busogo campus.

For more details, please contact the office of UR Students' Affairs at www.ur.ac.rw

Services and facilities

Accommodation

Hostels are available in each campus but space is limited. Many postgraduate students prefer to stay out of the campus in privately rented student apartments. For further information on residence and out of the campuses accommodation please contact student_welfare@ur.ac.rw

Student counselling and guidance

The Counselling and Guidance services exist in all campuses.

Career and personal counselling are provided to all students in need.

Students with disabilities

The University is sensitive to the needs of students with disabilities. A Centre for Inclusive and Special Needs Education has been established at UR campuses for developing and facilitating disabled students.

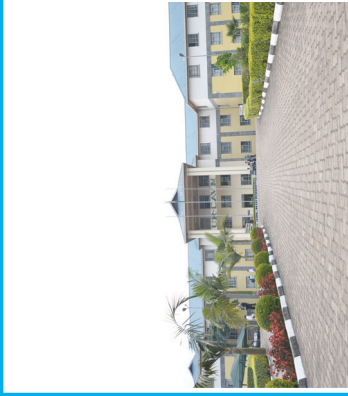
Libraries, laboratories and internet connectivity

Eight campuses of the University of Rwanda have libraries with E-Resources available to all students. The ICT Labs equipped with full internet connectivity facilitates an easy navigation and access to online learning materials. Qualified librarians provide general reference and instructional services to students.

Sports and culture

Sport is an important part of the University life and sports playgrounds are available and week end culture events are organized to help students relax.

UR CAMPUSES



A detailed map of Rwanda titled "RWANDA Carte administrative du Rwanda". The map displays the four provinces: PROVINCE DU NORD (North), PROVINCE DE L'EST (East), PROVINCE DU SUD (South), and PROVINCE DE L'OUEST (West). Each province is further divided into districts. Key locations are marked with blue squares containing the letters "UR" and small photographs of buildings or landmarks. The map includes a compass rose, a scale bar (0-60 km), and a legend. Neighboring countries are labeled: Uganda, Tanzania, D.R.C., and Burundi. A copyright notice at the bottom reads: "Carte de localisation des universités UR 2018".

